

RETAINING RING POSITION



BIKEYOKE DIVINE SL lower tube travel retaining ring position

DIVINE SL 80, DIVINE SL 100 and DIVINE SL 125 share the same lower tube.

The upper tube/cartridge units are still travel specific, so it is not possible to change from one travel to another.

The new universal lower tube features three grooves for the retaining ring (#32 on the explosion drawing), one for each specific travel. Make sure to install the retaining ring into the corresponding groove for each travel.

DIVINE SL 80

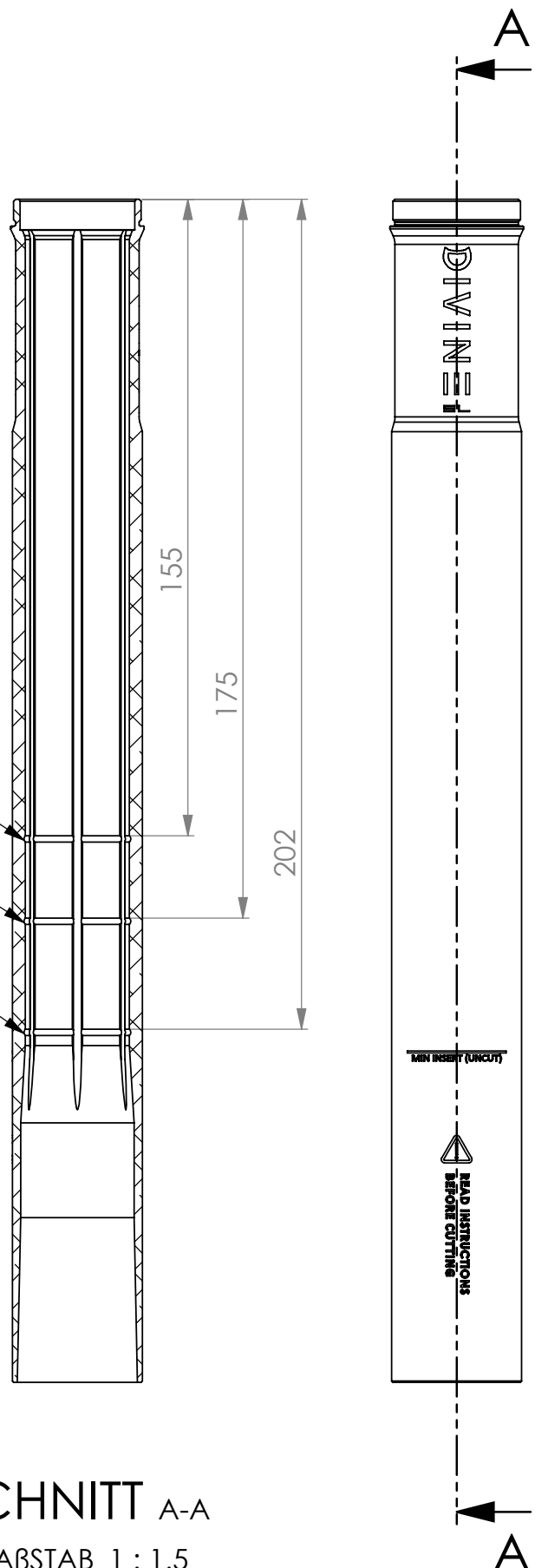
DIVINE SL 100

DIVINE SL 125

Use a (preferably old) lower bushing as driver to punch the ring out of one groove and into the next. Give it a firm and quick knock to drive the ring out of one seat, then push it into the next.



If you are unsure about these instructions, contact us at service@bikeyoke.com before proceeding with the lower tube installation.



SCHNITT A-A

MABSTAB 1 : 1.5